



== IT'S ALL ABOUT ==  
DETAILS



# IT'S ALL ABOUT DETAILS

Lâg Guitars provide an assertive and sharp aesthetic featuring the elegance of the French Lutherie process and the Algam Design Team. A real obsession with attention to detail has propelled the guitars of the Master Luthier Michel Lâg far beyond the French borders and into the international spotlight. Due to their remarkable acoustic and aesthetic qualities, they continue to collect international awards and praise from around the industry.



## 4

### TRAMONTANE

66 SERIES	PAGE 6
77 SERIES	PAGE 8
80 SERIES	PAGE 10
100 SERIES	PAGE 12
200 SERIES	PAGE 14
500 SERIES	PAGE 16

## 18

### OCCITANIA

300 SERIES	PAGE 20
400 SERIES	PAGE 22

## 24

### IMPERATOR

66 SERIES	PAGE 26
100 SERIES	PAGE 28
200 SERIES	PAGE 30
3000 SERIES	PAGE 32

### ARKANE

66 SERIES	PAGE 36
100 SERIES	PAGE 38
200 SERIES	PAGE 40
3000 SERIES	PAGE 42

## 46

### WORKSHOP FRANCE

## 48

### ARTISTS



# *Tramontane*<sup>®</sup>

---

## THE SWEET ESCAPE

Chosen as the Acoustic Guitar of the Year numerous times, the Tramontane range continues to seduce guitarists of all levels around the world. From the first creative sketch, to the ultimate finish, the precision, refinement and attention to detail of the Tramontane range provides a superior acoustic guitar.

Definitively conceived to be played on stage, the acoustic/electric models in the Tramontane range utilize the DirectLâg Plus and StudioLâg Plus preamp technologies for a professional and easy to use amplification solution that sounds excellent.

---



# 66

## Tramontane®

### 66 SERIES

#### SPECIFICATIONS

Top: Sitka Spruce  
 Back & Sides: Honey Mahogany  
 Bindings: Black & Ivory  
 Finish: High gloss

Neck: Mahogany / French Satin finish  
 Trussrod: 2 Way System  
 Fretboard: Indonesian Rosewood  
 Frets: 20 / Silver-Nickel (18 on Nylon models)  
 Scale: 650mm - 25.60"

Headstock: Mahogany  
 Machine Heads: Die-cast / Satin black  
 Nut: Black Graphite / 43mm - 1.69"  
 (48mm 1,89" on Nylon and D12 models)

Saddle: Compensated black graphite / 72mm - 2.83"  
 (Flat 80mm - 3.15" on Nylon Models)  
 Bridge: Indonesian Rosewood

(Acoustic / Electric models)  
 Pickup: Piezo NanoFlex  
 Preamp: DirectLäg Plus Folk & Nylon

Strings: D'Addario EXP

#### DREADNOUGHT

GLA T66D NATURAL  
 GLA TL66D LEFT-HANDED - NATURAL  
 GLA T66D12 12 STRINGS - NATURAL

#### DREADNOUGHT CUTAWAY

GLA T66DC NATURAL

#### DREADNOUGHT CUTAWAY ELECTRO

GLA T66DCE NATURAL  
 GLA TL66DCE LEFT-HANDED - NATURAL  
 GLA T66D12CE 12 STRINGS - NATURAL

#### AUDITORIUM

GLA T66A NATURAL

#### AUDITORIUM CUTAWAY ELECTRO

GLA T66ACE NATURAL

#### AUDITORIUM NYLON

GLA TN66A NATURAL

#### AUDITORIUM NYLON CUTAWAY ELECTRO

GLA TN66ACE NATURAL  
 GLA TNL66ACE LEFT-HANDED - NATURAL



# Tramontane®

## 77 SERIES

### SPECIFICATIONS

Top: Mahogany  
 Back & Sides: Mahogany  
 Bindings: Black & Ivory  
 Finish: French satin / Dark Mahogany

Neck: Mahogany / French Satin finish  
 Trussrod: 2 Way System  
 Fingerboard: Indonesian Rosewood  
 Frets: 20 / Silver-Nickel  
 Scale: 650mm - 25.60"

Headstock: Mahogany  
 Machine Heads: Die Cast / Satin Black  
 Nut: Black Graphite / 43mm - 1.69"

Saddle: Compensated black graphite / 72mm - 2.83"  
 Bridge: Indonesian Rosewood

(Acoustic / Electric models)  
 Pickup: Piezo NanoFlex  
 Preamp: DirectLâg Plus

Strings: D'Addario EXP

<b>DREADNOUGHT</b>	
GLA T77D	NATURAL
<b>DREADNOUGHT CUTAWAY ELECTRO</b>	
GLA T77DCE	NATURAL
<b>PARLOR ELECTRO</b>	
GLA T77PE	NATURAL
GLA TL77PE	LEFT-HANDED - NATURAL
<b>JUMBO</b>	
GLA T77J	NATURAL
<b>JUMBO ELECTRO</b>	
GLA T77JCE	NATURAL



# 80

## Tramontane®

### 80 SERIES

#### SPECIFICATIONS

Top: Solid Sitka Spruce  
 Back & Sides: Mahogany  
 Bindings: Black & Ivory  
 Finish: High Gloss

Neck: Mahogany / French satin finish  
 Trussrod: 2 Way System  
 Fingerboard: Indonesian Rosewood  
 Frets: 20 / Silver-Nickel  
 Scale: 650mm - 25.60"

Headstock: Mahogany  
 Machine Heads: Die cast high precision / 1:18 Ratio / Satin Black  
 Nut: Black graphite / 43mm - 1.69"

Saddle: Compensated black graphite / 72mm - 2.83"  
 Bridge: Indonesian Rosewood

(Acoustic / Electric models)  
 Pickup: Piezo NanoFlex  
 Preamp: DirectLåg Plus

Strings: D'Addario EXP

#### DREADNOUGHT

GLA T80D NATURAL

#### DREADNOUGHT CUTAWAY ELECTRO

GLA T80DCE NATURAL

#### AUDITORIUM

GLA T80A NATURAL

#### AUDITORIUM CUTAWAY ELECTRO

GLA T80ACE NATURAL

GLA TL80ACE LEFT-HANDED - NATURAL



# 1000

## *Tramontane*®

### 100 SERIES

#### SPECIFICATIONS

Top: Solid Red Cedar  
 Back & Sides: Mahogany  
 Bindings: Mahogany, maple and black  
 Finish: High Gloss

Neck: Mahogany / French satin finish  
 Trussrod: 2 Way System  
 Fingerboard: Indonesian Rosewood  
 Frets: 20 / Silver-Nickel  
 Scale: 650mm - 25.60"

Headstock: Indonesian Rosewood / Maple logo inlay  
 Machine Heads: Die cast high precision / 1:18 Ratio / Satin Black  
 Nut: Black graphite / 43mm - 1.69"

Saddle: Compensated black graphite / 72mm - 2.83"  
 Bridge: Indonesian Rosewood

(Acoustic / Electric models)  
 Pickup: Piezo NanoFlex  
 Preamp: StudioLag Plus

Strings: D'addario EXP / Savarez

#### DREADNOUGHT

- GLA T100D NATURAL
- GLA T100D-BLK BLACK
- GLA T100D-BRS BROWN SHADOW

#### DREADNOUGHT CUTAWAY ELECTRO

- GLA T100DCE NATURAL
- GLA T100DCE-BLK BLACK
- GLA TL100DCE-BLK LEFT-HANDED - BLACK
- GLA T100DCE-BRS BROWN SHADOW

#### AUDITORIUM CUTAWAY ELECTRO

- GLA T100ACE NATURAL
- GLA T100ACE-BLK BLACK
- GLA T100ACE-BRS BROWN SHADOW

#### AUDITORIUM SLIM CUTAWAY ELECTRO

- GLA T100ASCE NATURAL
- GLA T100ASCE-BLK BLACK
- GLA T100ASCE-BRS BROWN SHADOW
- GLA TL100ASCE-BRS LEFT-HANDED BROWN SHADOW





# 2000

## *Tramontane*<sup>®</sup>

### 200 SERIES

#### SPECIFICATIONS

Top: Solid Red Cedar  
 Back & Sides: Mahogany  
 Bindings: Rosewood & maple  
 Finish: French Satin

Neck: Mahogany / French satin finish  
 Trussrod: 2 Way System  
 Fingerboard: Indonesian Rosewood  
 Frets: 20 / Silver-Nickel  
 Scale: 650mm - 25.60"

Headstock: Indonesian Rosewood / Maple logo inlay  
 Machine Heads: Die Cast high precision / 1:18 Ratio / Satin Black  
 Nut: Black graphite / 43mm - 1.69"

Saddle: Compensated black graphite / 72mm - 2.83"  
 Bridge: Indonesian Rosewood

(Acoustic / Electric models)  
 Pickup: Piezo NanoFlex  
 Preamp: StudioLåg Plus

Strings: D'addario EXP / Savarez

#### DREADNOUGHT

GLA T200D NATURAL

#### DREADNOUGHT CUTAWAY ELECTRO

GLA T200DCE NATURAL

#### AUDITORIUM

GLA T200A NATURAL

#### AUDITORIUM CUTAWAY ELECTRO

GLA T200ACE NATURAL

GLA TL200ACE LEFT-HANDED - NATURAL





# 500

## *Tramontane*<sup>®</sup>

### 500 SERIES

#### SPECIFICATIONS

Top: Solid Sitka Spruce  
 Back & Sides: Rosewood  
 Bindings: Maple & Black  
 Finish: High Gloss

Neck: Mahogany / French satin finish  
 Trussrod: 2 Way system  
 Fingerboard: Ebony  
 Frets: 20 / Silver-Nickel  
 Scale: 650mm - 25.60"

Headstock: Ebony / Maple logo inlay  
 Machine Heads: Die Cast High Precision / 1:18 Ratio / Satin Black  
 Nut: Black graphite / 43mm - 1.69"

Saddle: Compensated black graphite / 72mm - 2.83"  
 Bridge: Ebony

(Acoustic / Electric models)  
 Pickup: Piezo NanoFlex  
 Preamp: StudioLåg Plus

Strings: D'addario EXP

<b>DREADNOUGHT</b>		
GLA T500D		NATURAL
<b>DREADNOUGHT CUTAWAY ELECTRO</b>		
GLA T500DCE		NATURAL
GLA TL500DCE	LEFT-HANDED -	NATURAL
<b>AUDITORIUM</b>		
GLA T500A		NATURAL
<b>AUDITORIUM CUTAWAY ELECTRO</b>		
GLA T500ACE		NATURAL



---

## ALREADY A CLASSIC

Heavily steeped in the tradition of the classical guitar, the Algam Design Studio took their time and reflected long before proposing an instrument with such irreproachable qualities. The Occitania range is sure to impress with its rich, warm tones and superb playability.

The enchanting sensations that come from the first contact with the guitar are certain to release the emotional expression of the classical guitarist inside us all. A divine symbiosis, amplified with perfection thanks to the professional StudioLâg Plus preamp in the acoustic/electric versions of the range.

---



# 3000

## OCCEITANIA®

### 300 SERIES

#### SPECIFICATIONS

Top: Solid Red Cedar  
Back & Sides: Rosewood  
Bindings: Black & Ivory  
Finish: High Gloss

Neck: Mahogany / High gloss finish  
Fingerboard: Indonesian Rosewood  
Frets: 19 / Silver-Nickel  
Scale: 650mm - 25.60"

Headstock: Rosewood  
Machine Heads: Nickel  
Nut: Black graphite / 51mm - 2"

Saddle: Flat black graphite / 80mm - 3.15"  
Bridge: Indonesian Rosewood

(Acoustic / Electric models)  
Pickup: Piezo NanoFlex  
Preamp: StudioLåg Plus Nylon

Strings: Savarez

#### CLASSICAL

GLA OC300 NATURAL

**CLASSICAL CUTAWAY ELECTRO**

GLA OC300CE NATURAL





# 4000<sup>®</sup> OCCITANIA<sup>®</sup>

## 400 SERIES

### SPECIFICATIONS

Top: Solid Englemann Spruce  
 Back & Sides: Rosewood  
 Bindings: Black & Ivory  
 Finish: High Gloss

Neck: Mahogany / High gloss finish  
 Fingerboard: Indonesian Rosewood  
 Frets: 19 / Silver-Nickel  
 Scale: 650mm - 25.60"

Headstock: Rosewood  
 Machine Heads: Nickel  
 Nut: Black graphite / 51mm - 2"

Saddle: Flat black graphite / 80mm - 3.15"  
 Bridge: Indonesian Rosewood

(Acoustic / Electric models)  
 Pickup: Piezo NanoFlex  
 Preamp: StudioLag Plus Nylon

Strings: Savarez

<b>CLASSICAL</b>	
GLA OC400	NATURAL
<b>CLASSICAL CUTAWAY ELECTRO</b>	
GLA OC400CE	NATURAL



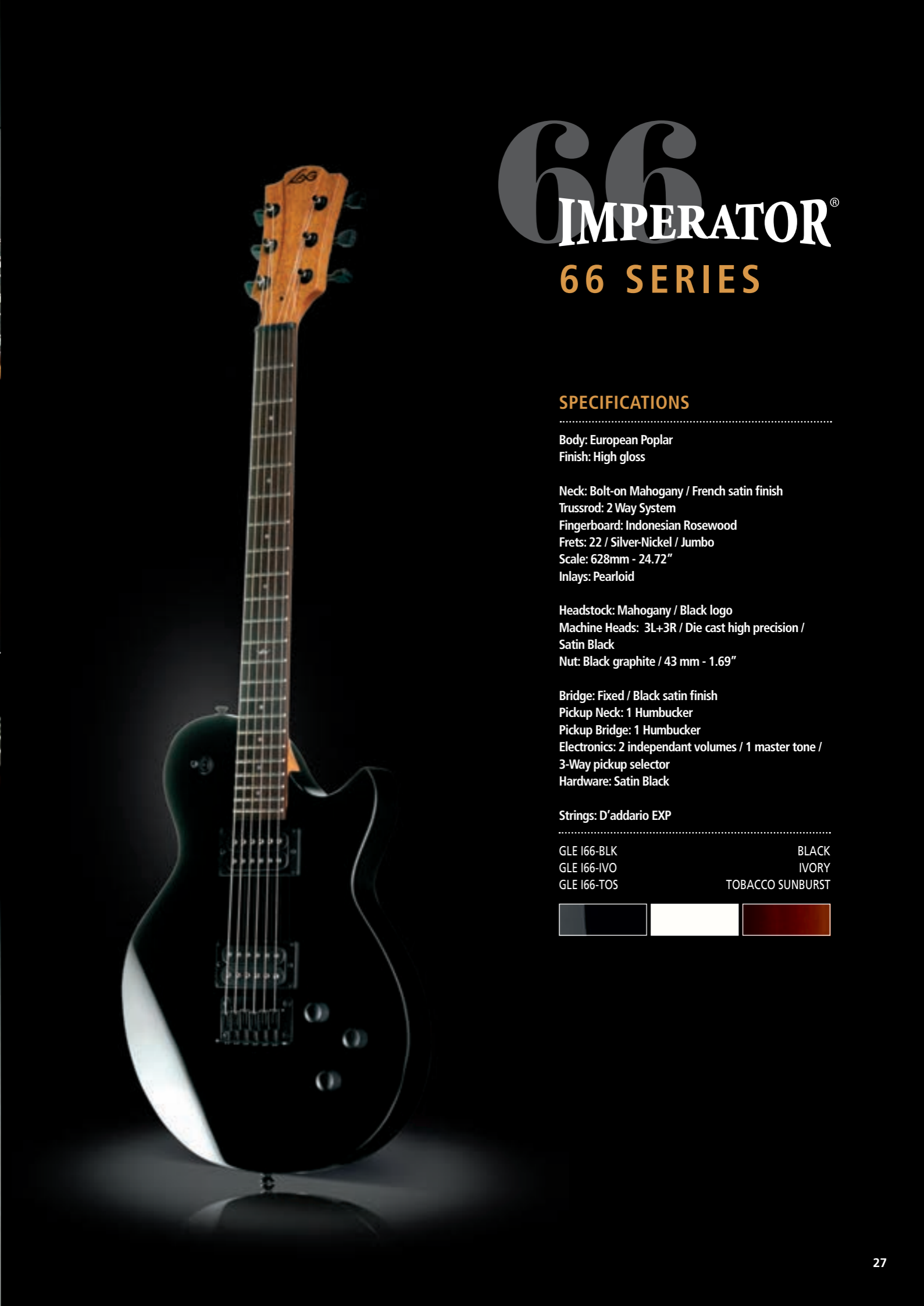
# IMPERATOR®

---

## TOTAL DOMINATION

The Emperor range puts musicians under its spell. It's the ideal guitar for Rock musicians with a smart style. By associating clean lines and hot pickups with a precise manufacturing process, the Algam Design Studio managed to give guitarists a successful and approachable range of guitars that are designed to dominate on stage. Thanks to its success for several years, the Emperor continues to spread its style, ensuring its long lasting legacy.

---



# 66 IMPERATOR®

## 66 SERIES

### SPECIFICATIONS

Body: European Poplar  
Finish: High gloss

Neck: Bolt-on Mahogany / French satin finish  
Trussrod: 2 Way System  
Fingerboard: Indonesian Rosewood  
Frets: 22 / Silver-Nickel / Jumbo  
Scale: 628mm - 24.72"  
Inlays: Pearloid

Headstock: Mahogany / Black logo  
Machine Heads: 3L+3R / Die cast high precision / Satin Black  
Nut: Black graphite / 43 mm - 1.69"

Bridge: Fixed / Black satin finish  
Pickup Neck: 1 Humbucker  
Pickup Bridge: 1 Humbucker  
Electronics: 2 independant volumes / 1 master tone / 3-Way pickup selector  
Hardware: Satin Black

Strings: D'addario EXP

GLE I66-BLK	BLACK
GLE I66-IVO	IVORY
GLE I66-TOS	TOBACCO SUNBURST





# 100

## IMPERATOR®

### 100 SERIES

#### SPECIFICATIONS

Body: European Poplar  
Finish: High Gloss

Neck: Bolt-on Mahogany / French satin finish  
Trussrod: 2 Way system  
Fingerboard: Indonesian Rosewood  
Frets: 22 / Silver-Nickel / Jumbo  
Scale: 628mm - 24.72"  
Inlays: Pearloid

Headstock: Rosewood / Pearloid logo  
Machine Heads: 3L+3R / Die cast high precision /  
Satin Black  
Nut: Black Graphite/ 43 mm - 1.69"

Bridge: Fixed / Black satin finish  
Pickup Neck: 1 Alnico Humbucker  
Pickup Bridge: 1 Alnico Humbucker  
Electronics: 2 independant volumes / 1 master tone /  
3-Way pickup selector  
Hardware: Satin Black

Strings: D'addario EXP

GLE 1100-BLK BLACK  
GLE 1100-HOS HONEY SHADOW  
GLE 1100-OPS OLD PORT SHADOW





# 200

## IMPERATOR®

### 200 SERIES

#### SPECIFICATIONS

Body: Poplar / Figured Mahogany top  
 (Except black model)  
 Bindings: Mahogany and black  
 Finish: High Gloss

Neck: Set Mahogany / French satin finish  
 Trussrod: 2 Way System  
 Fingerboard: Indonesian Rosewood  
 Frets: 22 / Silver-Nickel / Jumbo  
 Scale: 628mm - 24.72"  
 Inlays: Pearlloid

Headstock: Rosewood / Pearlloid Logo  
 Machine Heads: 3L+3R / Die cast high precision /  
 Satin Black  
 Nut: Black graphite / 43 mm - 1.69"

Bridge: Tunomatic & Stop tailpiece / Black satin finish  
 Pickup Neck: 1 Duncan Design HB-102-N Humbucker  
 Pickup Bridge: 1 Duncan Design HB-102-B  
 Humbucker  
 Electronics: 2 independant volumes with Push-Pull /  
 1 master tone / 3-Way pickup selector  
 Hardware: Satin Black

Strings: D'addario EXP

GLE I200-BLK BLACK  
 GLE I200-BRS BROWN SHADOW  
 GLE I200-OPS OLD PORT SHADOW







# 3000

## IMPERATOR<sup>®</sup>

### 3000 SERIES

Made in France

#### SPECIFICATIONS

Body: Solid Mahogany / Solid figured maple top  
Bindings: Mahogany and black  
Finish: High gloss

Neck: 1 piece mahogany set / French satin finish  
Trussrod : 2 Way System  
Fingerboard: Ebony  
Frets: 22 / Silver-Nickel / Medium  
Scale: 629mm - 24.76"  
Inlays: Mother of pearl

Headstock: Ebony / Mother of Pearl Logo inlay  
Machine Heads: 3L+3R Gotoh High precision /  
Die Cast / Satin Black  
Nut: Black graphite / 43 mm - 1.69"

Bridge: Tunomatic & Stop tailpiece /  
French satin finish  
Pickup Neck: 1 Seymour Duncan PAF 59 humbucker  
Pickup Bridge: 1 Seymour Duncan Jeff Beck  
Humbucker  
Electronics: 2 independant volumes with Push-Pull /  
1 master tone / 3-Way pickup selector  
Hardware: Satin Black

Strings: D'addario EXP  
Case: Arkane Crococase

GLV I3000-BST	BLACK SEE THRU
GLV I3000-OPM	OLD PORT MAHOGANY
GLV I3000-SPM	SPALTED MAPLE





# Arkane®

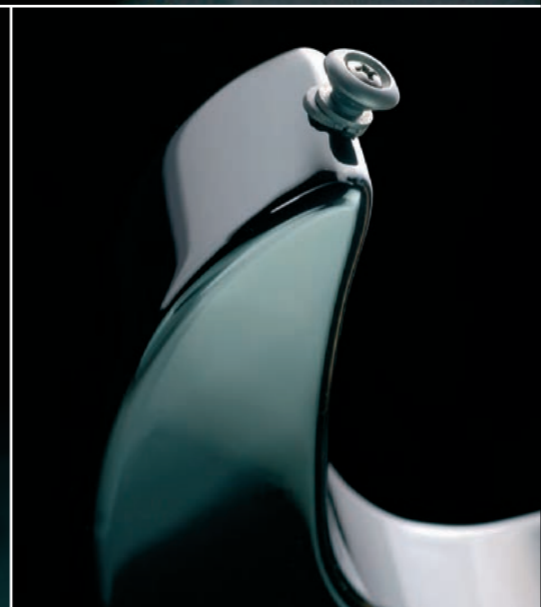
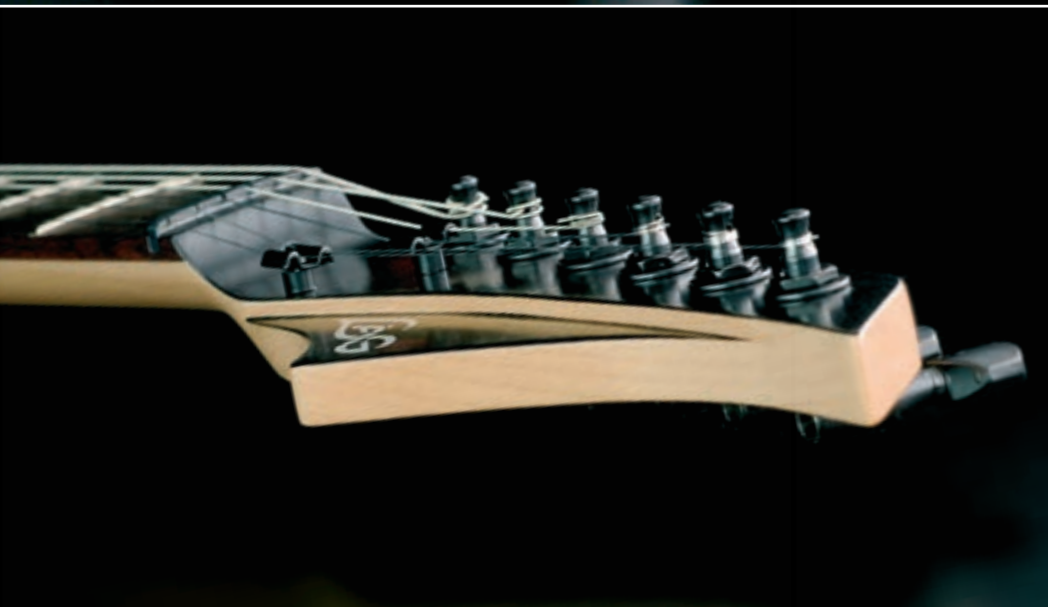
---

## THE GUITAR THAT MAKES YOU THE HERO

The Algam Design Studio conceived the Arkane range of guitars to equip guitarists wishing to defend their on-stage inspirations with a real weapon of mass destruction\*. Featuring a pure concentration of power, handiness and reliability, its energy comes from its elegant dynamic lines and devastating configuration of pickups.

\*No carry permit is required for the possession of an Arkane in public

---



# 66 Arkane®

## 66 SERIES

### SPECIFICATIONS

Body: European Poplar  
Finish: High gloss

Neck: Bolt-on Maple / French satin finish  
Trussrod: 2 Way System  
Fingerboard: Indonesian Rosewood  
Frets: 24 / Silver-Nickel / Jumbo  
Scale: 648mm - 25.51"  
Inlays: Pearloid

Headstock: Satin Black / Silver Logo  
Machine Heads: 6 in line / Die cast high precision / Satin Black  
Nut: Black graphite / 43 mm - 1.69"

Vibrato: Standard Tremolo  
Pickup Neck: 2 Single coils  
Pickup Bridge: 1 humbucker  
Electronics: 1 volume / 1 master tone / 5-Way pickup selector  
Hardware: Satin Black

Strings: D'addario EXP

GLE A66-BLK	BLACK
GLE A66-DRD	DARK RED
GLE A66-WHT	WHITE





# 100

## Arkane®

### 100 SERIES

#### SPECIFICATIONS

Body: European Poplar / Mahogany top on GRS  
Finish: High gloss

Neck: Bolt-on Maple / French satin finish  
Trussrod: 2 Way System  
Fingerboard: Indonesian Rosewood  
Frets: 24 / Silver-Nickel / Jumbo  
Scale: 648mm - 25.51"  
Inlays: Pearloid

Headstock: Satin Black / Silver Logo  
Machine Heads: 6 in line / Die cast high precision/  
Satin Black  
Nut: Black graphite / 43 mm - 1.69"

Bridge: Fixed / Black satin finish  
Pickup Neck: 1 Duncan Design HB-103-N Humbucker  
Pickup Bridge: 1 Duncan Design HB-103-B  
Humbucker  
Electronics: 1 volume / 1 master tone / 3-Way pickup  
selector  
Hardware: Satin Black

Strings: D'addario EXP

GLE A100-BLK BLACK  
GLE A100-GRS GOTHIC RED SHADOW





# 2000

## Arkane®

### 200 SERIES

#### SPECIFICATIONS

Body: European Poplar / Figured mahogany top  
(Except black model)  
Bindings: Maple & Black  
Finish: High gloss

Neck: Bolt-on maple / French satin finish  
Trussrod: 2 Way system  
Fingerboard: Indonesian Rosewood  
Frets: 24 / Silver-Nickel / Jumbo  
Scale: 648mm - 25.51"  
Inlays: Pearloid

Headstock: Satin Black / Silver Logo  
Machine Heads: 6 in line / Die cast high precision /  
Satin Black  
Nut: Floyd Rose locking system / Black / 43 mm - 1.69"

Vibrato: Floyd Rose Spécial  
Pickup Neck: 1 EMG HZ SA-1 Humbucker  
Pickup Bridge: 1 EMG HZTB-1 Humbucker  
Electronics: 1 volume / 1 master tone with Push-Pull /  
5-way pickup selector  
Hardware: Satin Black

Strings: D'addario EXP

GLE A200-BLK BLACK  
GLE A200-BRS BROWN SHADOW





# 30000<sup>®</sup> Arkane

## 3000 SERIES

Made in France

### SPECIFICATIONS

Body: Solid Mahogany / Solid Figured Maple top  
 Bindings: Maple and black  
 Finish: High gloss

Neck: Bolt-on Hard Rock Canadian Maple /  
 French satin finish  
 Fingerboard: Ebony  
 Frets: 24 / Silver-Nickel / Jumbo  
 Scale: 648mm - 25.51"  
 Inlays: Mother of pearl

Headstock: Ebony / Mother of Pearl Logo inlay  
 Machine Heads: 6 in line Gotoh high precision /  
 Die cast / Satin Black  
 Nut: Floyd Rose locking system / Black / 43 mm - 1.69"

Vibrato: Floyd Rose Spécial  
 Pickup Neck: 1 EMG 89 Neck humbucker  
 Pickup Bridge: 1 EMG 81 TW Bridge Humbucker  
 Electronics: 1 volume / 1 master tone with Push-Pull /  
 3-way pickup selector  
 Hardware: Satin Black

Strings: D'addario EXP  
 Case: Arkane Crocose

GLV A3000-BST                      BLACK SEE THRU  
 GLV A3000-DPU                      DEEP PURPLE  
 GLV A3000-SPM                      SPALTED MAPLE



## WORKSHOP BÉDARIEUX FRANCE

---

In Bédarieux in the South of France, the know-how of the master instrument maker Michel Lâg and his team of passionate experts continue to make the pride of the Occitanian brand.

Their workshop blends the perfected traditional methods of instrument building along with modern tools and technology to create the epitome of fine musical instruments.

Supported by the talented designers of the Algam Design Studio, the most outlandish and eccentric projects are always imagined, conceived and realized with the same obsessive attention to detail and perfection.

Made in France

---



## CUSTOM & 3000 SERIES:

---

With over 30 years of knowledge, Lâg Guitars suggests that the most demanding guitarists should consider conceiving their own guitar by taking advantage of the on-line configurator that can be found at [lagguitars.com](http://lagguitars.com)

## SIGNATURES:

---

Lâg Stringed-instrument makers in the French workshop in Bédarieux, create guitars which correspond perfectly to the acoustic and aesthetic expectations of the artists for which they are made.

## ARTISTS:

---

Since the creation of the very first Lâg guitar by the master instrument maker with the same name, many artists have come from varied musical backgrounds worldwide to be seduced by the singular character of the brand, becoming the real ambassadors.

# LÂG FRIENDS



JEAN-FÉLIX LALANNE



DOWN  
PHIL ANSELMO



QUEEN  
BRIAN MAY



OZZY - FIREWIND  
GUS G



NEVERMORE  
JEFF LOOMIS



STONE SOUR  
JOSH RAND



YAEL NAIM



KAMELOT  
THOMAS YOUNGBLOOD



MICHEL HAUMONT

ACHARD CYRIL - ALRIC PHILY - ARZEL GILDAS - AUFRAY HUGUES - AYACHE JENNIFER (SUPERBUS) - BARNEY PHIL - BENSON BRENDAN - BERNARD GUILLAUME (KLONE) - BERTIGNAC LOUIS - BLACK NEAL - BLANC MAO - CHAB LAURA (THE VOICE) - CHEDID MATTHIEU - CEDRO BOB - CHESNEAU DIDIER (HEADLINE) - CONSTANTINE (PRIMAL FEAR) - DINNAT JEFF

DORBEKO MAXIM - DUTRONC THOMAS - ENGELIN NICLAS (IN FLAMES) - FELTIN JULIEN - FILLOL OLIVIER (FACE TO FACE) - FOCONE PATRICE (SUPERBUS) - GIANOLA JGOR (UDO) - GRACE AND THE VICTORY RIDERS - HARMONIC GENERATOR - HEDGER CHARLES (CRADLE OF FILTH) - HOLLOWAY JASON (ATHEIST) - IN FLAMES - JARRE JEAN MICHEL - JIOSA DENNY - KENY



# LÂG FRIENDS



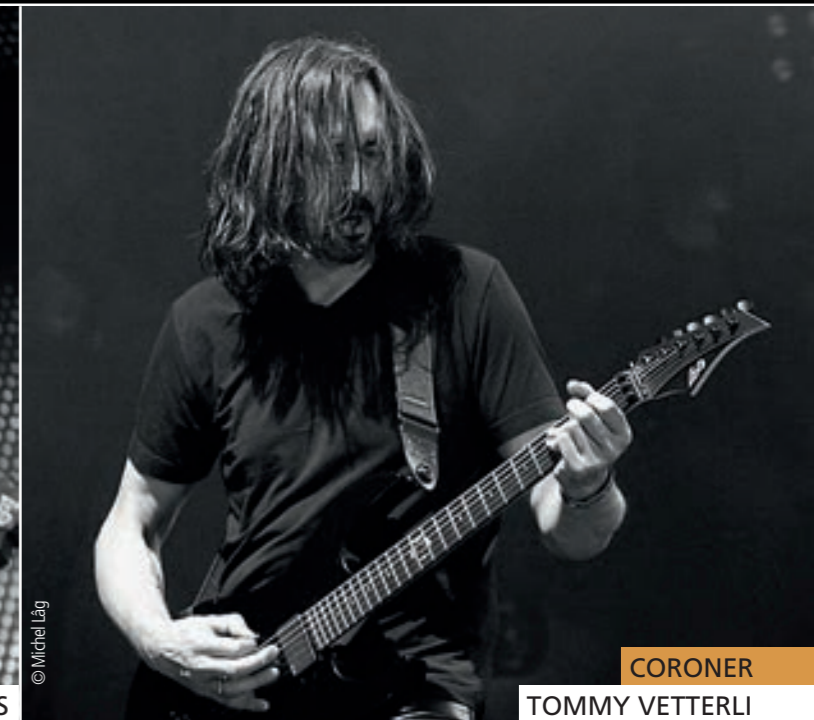
**MOTORHEAD**  
PHIL CAMPBELL



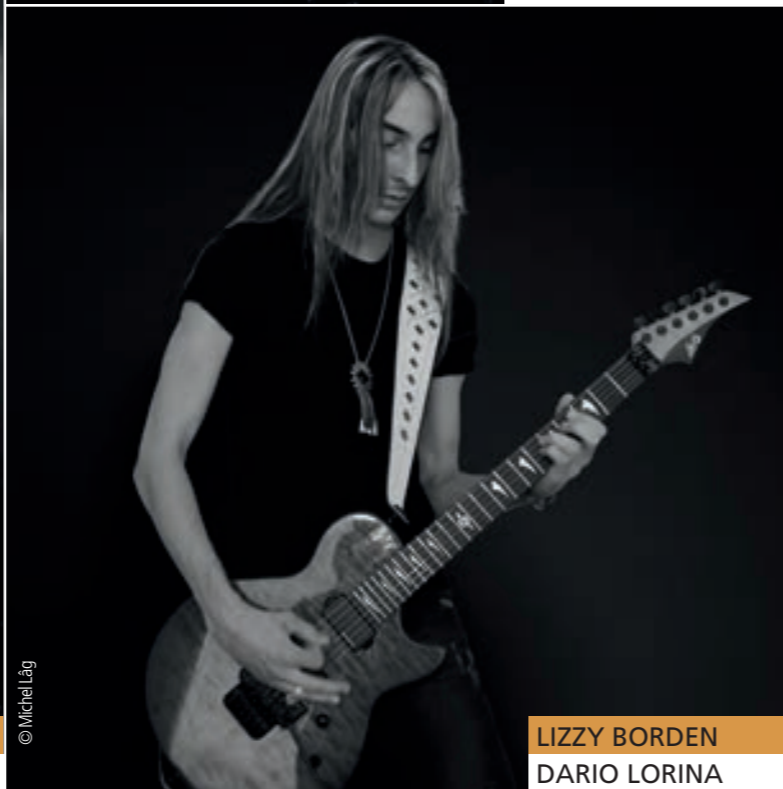
**ADAGIO**  
STÉPHAN FORTÉ



**KEZIAH JONES**



**CORONER**  
TOMMY VETTERLI



**LIZZY BORDEN**  
DARIO LORINA



**CHRIS GEORGE**



**PAT O'MAY**

KOSTEROVA JULIA - LABORDE CHRISTIAN - LALANNE FRANCIS - LARIO JORGE - LE BIGOT GILLES  
- LE DEUNFF DAVID (C2C) - LEROY NOLWENN - LIV KRISTINE (LEAVES EYE'S) - LIZZARD - LORINA  
DARIO (LIZZY BORDEN) - MADER LOGAN (PRODUCER, MACHINE HEAD) - MAMAC (JEAN-  
MARC LEMERRE) - MARCHAND NICOLAS («NAWO») - MARS MELISSA - MENIKETTI DAVE (Y&T)

MI TIERRA - MOUSTAKI GEORGES - NYMANN JOHN - PERRAUDIN DAVID - PETROSSI DUSHAN  
(IRON MASK) - PONTET THIERRY - RAINEY JASON (SACRED REICH) - RAMOS BRUNO (MANIGANCE)  
- RITT AXEL (GRAVE DIGGER) - ROELANTS WIM - SASSY YOSSI (ORPHANED LAND) - SERANE KENNY  
- SHERIDAN TONY - SOLORAZAF - TRAORE ROKIA - VIANA AMEN - YOUNG ADAM (OWL CITY)



IT SEEMS  
OUR OBSESSION WITH  
**DETAILS**  
HAS BEEN NOTICED...



**DECEMBER 2012**  
**PRODUCT EXCELLENCE AWARD - MUSIC INC**  
" The easiest sale we make at the store today and simply without equal in the marketplace "



**JULY 2012**  
**BEST IN SHOW - SUMMER NAMM**  
" It's beautiful, gorgeous, great sounding, well set-up, high quality products "



**DECEMBER 2011**  
**DEALERS CHOICE AWARD - MMR**  
" Remarkably high quality instruments with a top-notch European lineage "



**JANUARY 2011**  
**BEST IN SHOW - WINTER NAMM**  
" Even at that level (of price), they have carved headstocks, really beautiful binding and solid woods "



**JANUARY 2010**  
**BEST IN SHOW - WINTER NAMM**  
" They have acoustic guitars (...) that sound and play like guitars at twice that price "



== IT'S ALL ABOUT DETAILS ==



==== IT'S ALL ABOUT DETAILS ====

> **Headquarters:** ALGAM, 2 rue de Milan 44484 Thouaré cedex France

> **Factory:** LAG Guitars - Rte de St Pons 34600 Bédarieux - France

> **Distributors:** Details on [lagguitars.com](http://lagguitars.com)

International Trademarks: Låg, Tramontane, Occitania, Arkane, Emperor names and Occitania Cross design are registered Trademarks by ALGAM (Musical Instruments class).  
International Patterns: Låg rosette design, Låg headstock shapes and Låg acoustic guitar bridge are registered Patterns by ALGAM.  
Låg specifications are subject to change in order to search for perfection permanently.